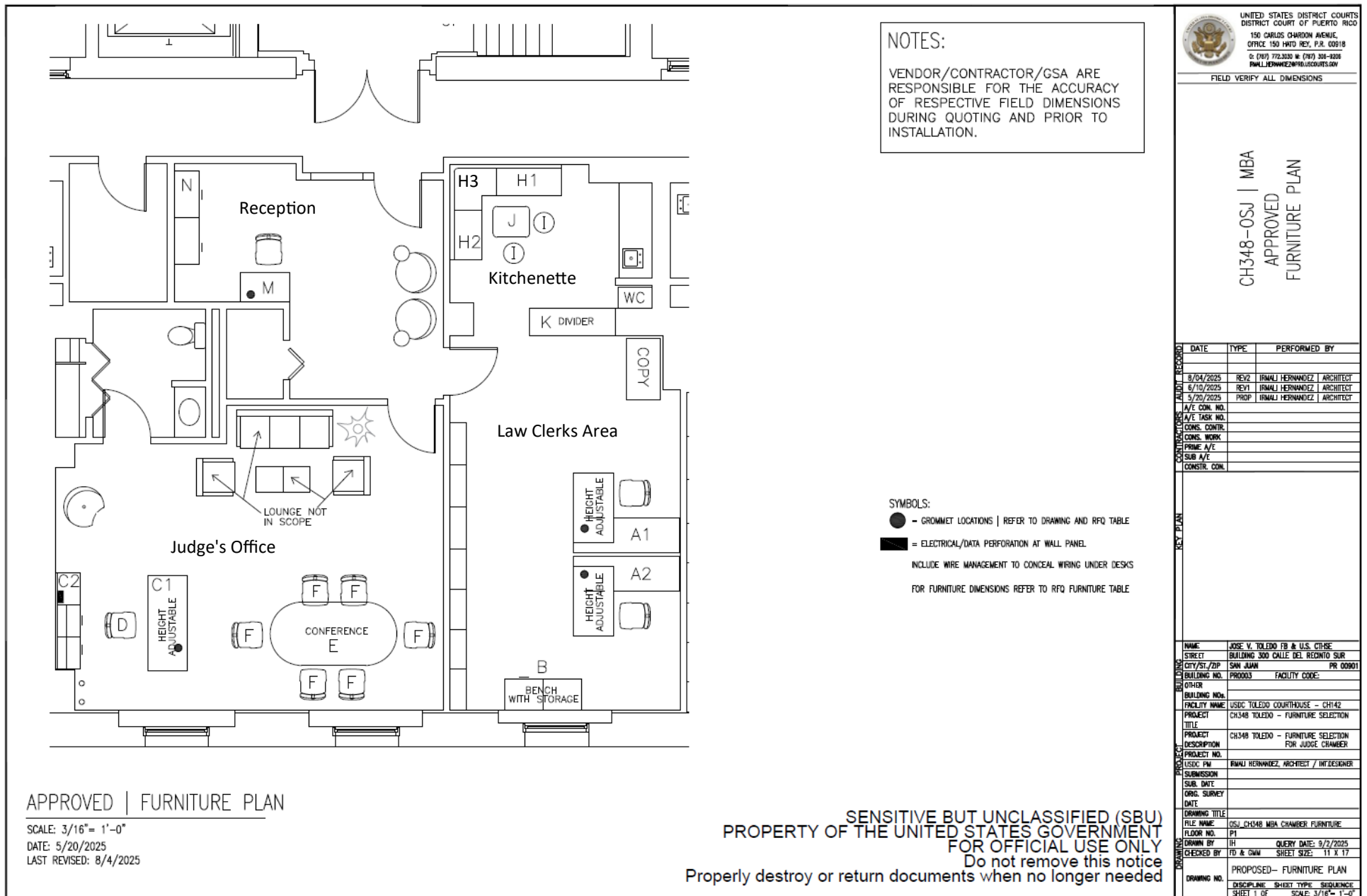


# GSA Schedule

9/3/2025-R1  
9/02/2025

Selected Furniture Catalogue  
CH3348-OSJ | MBA





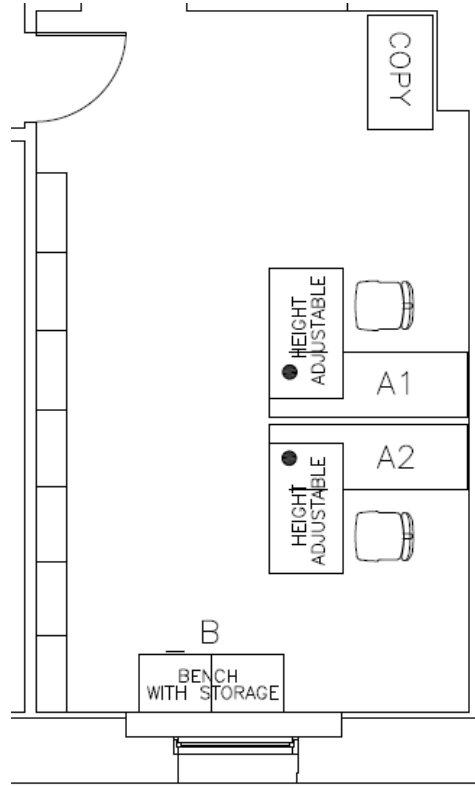
# GSA Schedule

## Selected Furniture Floor Plan



# Selected Furniture Catalogue

CH3348-OSJ | MBA



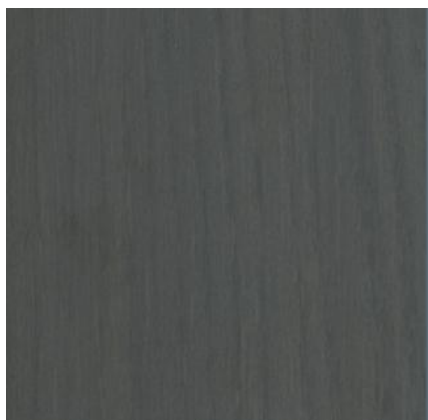
## Law Clerks Area



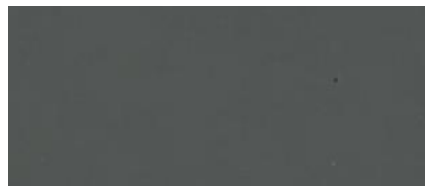
teknion

expansion  
casegoods

Expansion® Casegoods is a laminate casegoods collection suited to a broad range of office applications. A uniform product platform and choice of materials makes it easy to design classic or contemporary office suites tailored to budget requirements. Expansion Casegoods projects an image of quality at a competitive price.



Desk tops / edge & Bench Storage:  
Teknion | Foundation Laminates  
Color: Smoked Oak | 7B

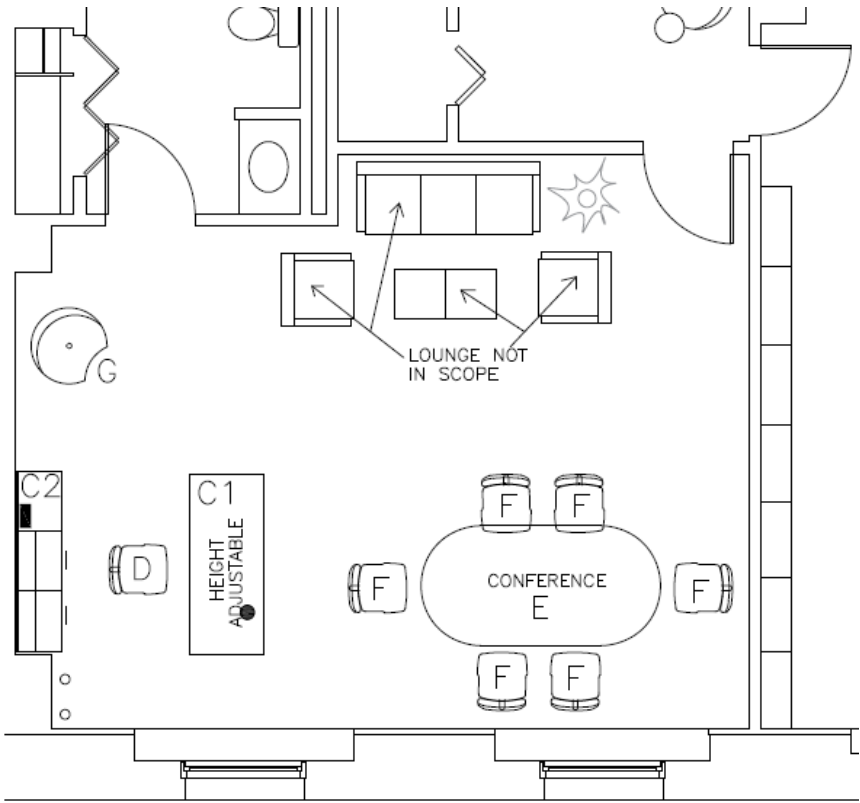


Metal pulls:  
Teknion | Foundation Paint  
Color: Greystone | U/24



Bench seat and ottomans:  
LUUM / Multipurpose | Crossgrain  
Color: Amaranth





# Judge's Office

## Selected Furniture Catalogue

CH3348-OSJ | MBA





# Zira™

Zira™ introduces walls with floating shelves and storage elements that deliver a custom millwork look to any space without the additional cost. Height adjustable desk integration, new fixed height desk options, frameless glass sliding doors and more are the latest additions to the Zira desking series that will personalize your workspace.

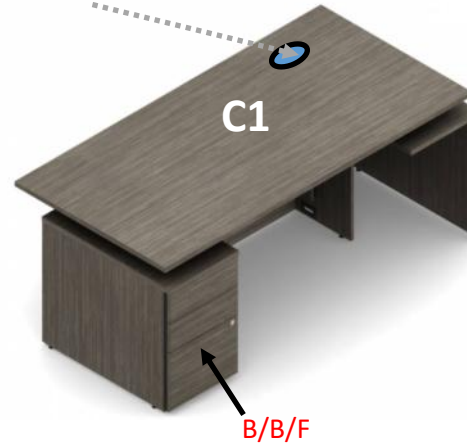
C2



C1

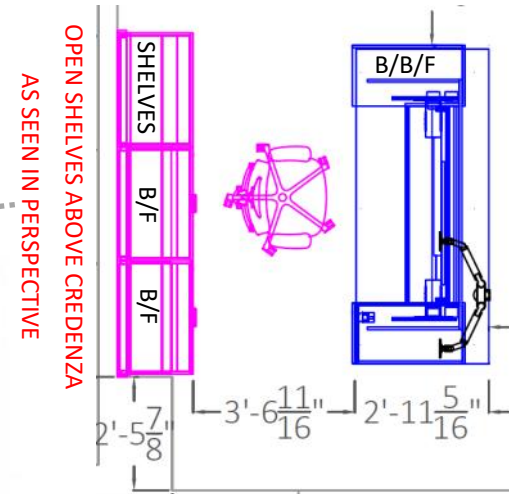
grommet

C1



B/B/F

Plan view: of Judge's Desk



Bar Black (HR) Handle

Desk tops /edges | Back panel,  
Storage Credenza and Shelves:

Global / JAW | Wood Veneers Finishes

Color: Java

Pulls / metal: Bar Black (HR) Handle

## ADJUSTABLE HEIGHT DESK PARTS:

**FTZ52LFNL:** 24"d, 2 Stage Column, Use w/ Straight 84" Wide Zira HA Pedestal Desk or 66" thru 84" Wide No Pedestal Desk, Height Adjustable Programmable Base

**ZH3684FS3:** 36"d x 84"w x 29.5"h-49"h, Single Pedestal Height Adjustable Desk, B/F/F on Right, Top Inset 1" on Left & User Side

## CREDENZA & BACKWALL PANEL PARTS:

**Z30M2HSHNS:** 20"d x 30"w x 22.75"h, Storage Shell, 1.5 High Open Storage w/1 Shelf, No Top and Back, Used with 1.5 High 23.25"h. Top and Back Kit

**ZEFC72:** (2) 70.5"h, End Cap Filler, Non-Handed, Used w/71.9"h, Wall Mounted Panel with Shelves

**Z30M2HES:** (2) 20"d x 30"w x 22.75"h, Storage Shell, 1.5 High Box on Top, Lateral File on Bottom, No Top and Back, Used with 1.5 High 23.25"h Top and Back Kit

**Z2090HTB:** 20"d x 90"w x 23.25"h, 1.5 High Storage Shell Top and Back Kit, Used with 22.75"h Storage Shells

**ZWHP3072:** 30"w x 71.9"h, Wall Mounted Panel





D

teknion

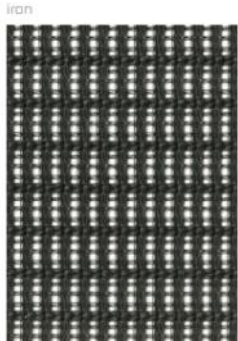
## NUOVA CONTESSA

Nuova Contessa is a redesigned and enhanced version of Teknion's classic Contessa task chair. Nuova Contessa's refined aesthetic, advanced adjustment mechanisms, increased strength and durability deliver uncompromised comfort and performance for diverse body types. Although Nuova Contessa inherited Contessa's flowing and beautiful frame lines, a redesigned back and seat frame offer a lighter and thinner design, enhancing the chair's sophistication and elegance across the work environment.

Nuova Contessa's signature smart operation concept enables adjustments to be easily made while the user is seated, encouraging accurate positioning and continuous movement. Nuova Contessa's mesh serves both function and aesthetics, suspending the body in comfort and giving the chair a visual lightness. A newly developed mesh combines yarns excellent in durability, texture, stretchability and strength. The chair is offered as an all-mesh model or with mesh back and upholstered seat. An elegant synthesis of European design and seating technology, Nuova Contessa represents a timeless refinement of function, comfort and style.

Chair **BACK** | Nu Tess Mesh:

Color: Iron | SB15



LUMBAR SUPPORT

Chair **SEAT** | Upholstery:LUUM / Multipurpose | Actuate

Color: Induction

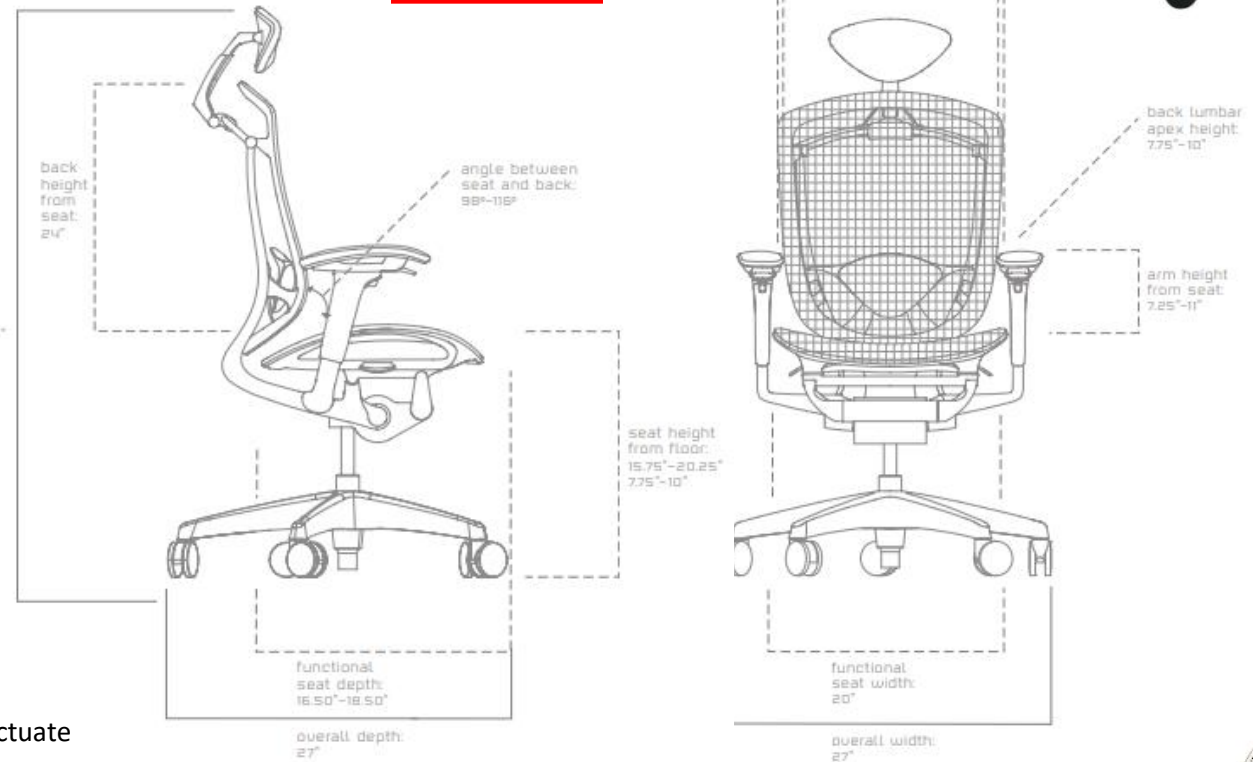
**ARMS:**Black / Poly | 4D  
Adjustable**FRAME:**

Color: Ebony

With **HEADREST**

D

D



# E DAVIS<sup>®</sup> Tavo

Tavo is a series of conference tables marked by rich character and a striking mix of materials. The design is centered around the concrete base, generating a prolific presence with its sculptural shape and natural aesthetic. Blending the stylistic comforts of home with increased commercial durability, Tavo's silhouette stands out as a modern showpiece design for any interior.



DESIGNED BY  
JEHS+LAUB

## TOP OAK VENEERS



10 Alabaster White Oak



11 Light Oak



12 Golden Oak



13 Harvest Oak



14 Slate Oak



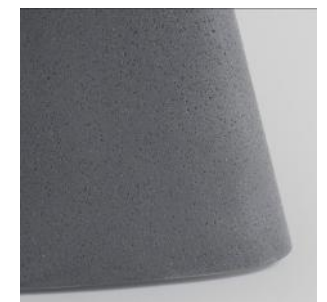
15 Mineral Grey Oak



## MOULDED CONCRETE SINGLE BASE COLOR OPTIONS:



Light Grey



Dark Grey

## FEATURES

### Base

Light and Dark grey molded concrete

### Single Base

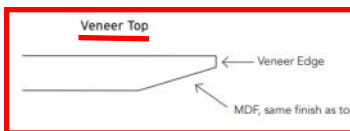
### Glides

Adjustable glides are standard

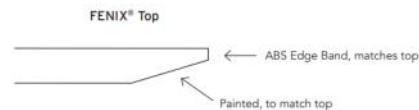
### Tops

**Solid Wood** - Solid Light Ash and Heartwood Ash, Oak, and Walnut tops. Clear lacquer is standard for solid wood tops  
**Veneer or FENIX<sup>®</sup>** - MDF core with veneer or FENIX<sup>®</sup> top. All FENIX<sup>®</sup> tops are edge banded with a matching ABS edge band

### Edge Detail



Solid Wood Top





F

teknion zones

F



**BASE:** Swivel Tilt w/ 5-Star  
with casters

Conference Chairs **SEAT:**  
LUUM / Upholstery | Decoy  
Color: Trip Wire



Conference Chairs **BASE:**  
Teknion | Foundation Paint  
Color: Greystone | U/24





F500 by Artifort  
product information

Lounge Chair | Upholstery:  
LUUM / Multipurpose | Simplicity  
Color: Lavender



Dimensions

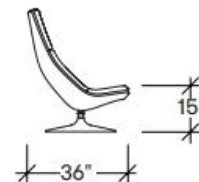
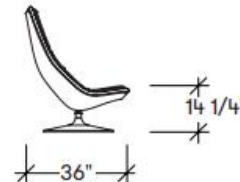
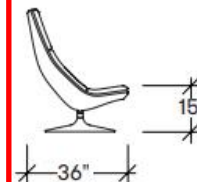
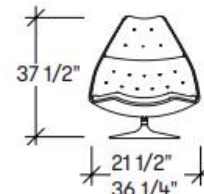
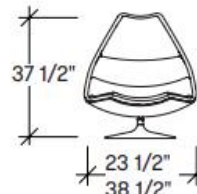
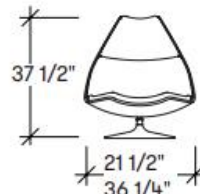
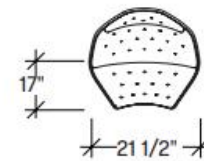
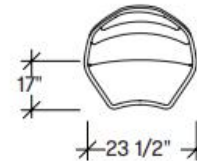
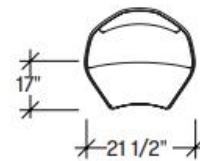
Offered through a partnership with Artifort in Schijndel, The Netherlands, the F500 series distinguishes itself as a classic armchair with a comfortable shape and striking upholstery. Designed by Geoffrey Harcourt RDI in 1967, this classic piece blossomed from the idea that Harcourt's girlfriend liked to curl up in a lounge chair in a cross-legged position. This resulted in the F500: a chair that has all the comfort of an easy chair, and wide enough to meet this unusual seating area.

Three upholstery styles makes the chair highly configurable and unique. A fixed upholstery has clean styling for corporate interiors, a welted version add aspects of home while the tufted button version is an iconic piece that makes a statement.

Lounge Chair: Metal DISC base

Teknion | Foundation Paint

Color: Sand | 27/3



Lounge Chair, Disc Base,  
Fixed upholstery  
F510

Lounge Chair, Disc Base,  
Fixed upholstery  
with Welt  
F585

Lounge Chair, Disc Base,  
Tufted upholstery  
F588

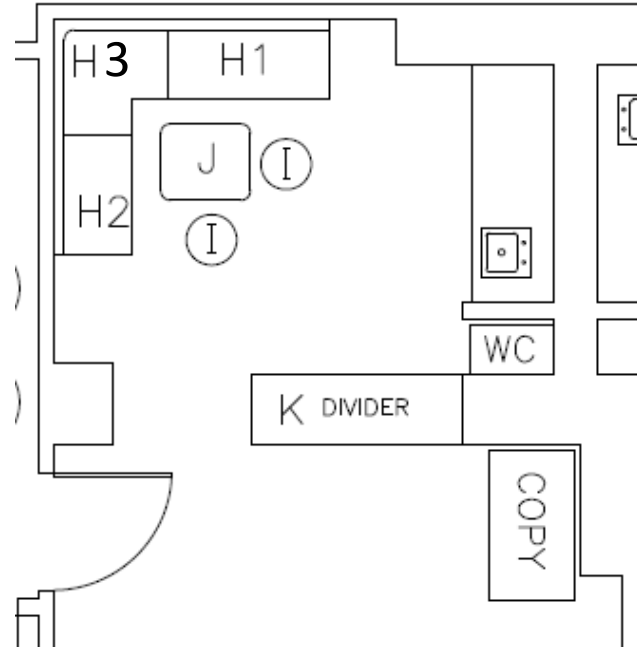


## Selected Furniture Catalogue

CH3348-OSJ | MBA



# Kitchenette





# H1, H2, H3 River™



Left Side  
52"w x 30"d x 32"h



Corner Side  
37.5"w x 37.5"d x 32"h,  
90 Degree



Right Side  
52"w x 30"d x 32"h



Round corners



Information Revised on 9/3/2025-R1:

Sectional Sofa at kitchenette | **Back**

Global | Seating textiles | Allante FFree

Color: A24 – Province Blue / Blue turquin | 0723



Sectional Sofa at kitchenette | **Seat**

Global | Seating textiles | Allante FFree

Color: A13F– Chateau Grey / Tuffeau | 0923

teknion

**COLLABORATIVE**



(2) Ottomans  
18"Dia X 18-1/2"h



Round Ottomans / Single Upholstery

LUUM / Multipurpose | Crossgrain

Color: Amaranth

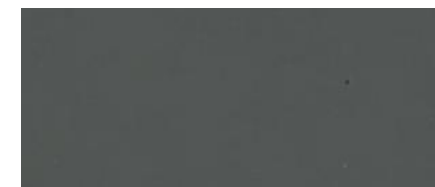
teknion

**EZ Fence Beam**

**K**



48"w X 66"h X 20"d



Kitchenette Markerboard/Divider Frame:

Teknion | Foundation Paint

Color: Greystone | U/24



# expansion<sup>®</sup> casegoods

**Meeting Tables**

**H-A Conference Tables**

Conference Tables

BC\_CHP, BC\_CRP, BC\_CRK, BC\_CRLB, BC\_CRTB, BC\_CWA, BC\_CBP, BC\_CBK, BC\_CVP

**H-A Meeting Tables**

Meeting Tables

BC\_MHRB, BC\_MRP, BC\_MRLB, BC\_MRTB, BC\_TRTB, BC\_MWA, BC\_MBP, BC\_MBTB, BC\_MPLB

BC\_MOK, BC\_MOLB, BC\_MOSB, BC\_ROF, BC\_MSK, BC\_MSLB, **BC\_MSSB**, BC\_MSFB

**H-A Meeting Peninsulas**

Fixed Meeting Peninsulas

29" h (Shore) or 42" h

BC\_HRW, BC\_HDW, BC\_HBW, BC\_HPW, BC\_FR, BC\_FD, BC\_FT, BC\_FP

**Gable for Fixed Meeting Peninsulas**

BC\_G

**Media Wall**

F For Peninsula, S Standalone

BCMW

**Metal Shelf - Media Wall**

BCSMW

**TV Stand - Fixed or H-A Meeting Peninsulas**

M Metal Shelf Ready, N No Shelf

BCTV

**Metal Shelf - TV Stand**

BCSTV

**Writable Glass Meeting Tables**

BCGRLB, BCGRTB, BCGSSB

Available in Flintwood Colors

Available Glass Finish, if applicable: Back-Painted

Available Corner Details, if applicable: S Straight, R Radius

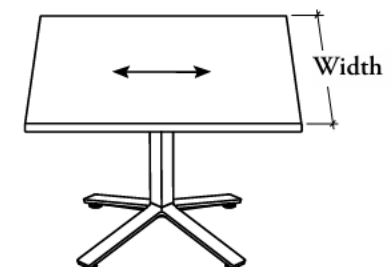
Support Styles, if applicable: Blade, Leg (L), Reel Post, Monopod, Base (M)

Kitchenette Table top / edge:  
Teknion | Foundation Laminates  
 Color: Greystone | 2S

Kitchenette Table Metal Base:  
Teknion | Foundation Paint  
 Color: Gilded Ash | 73-1

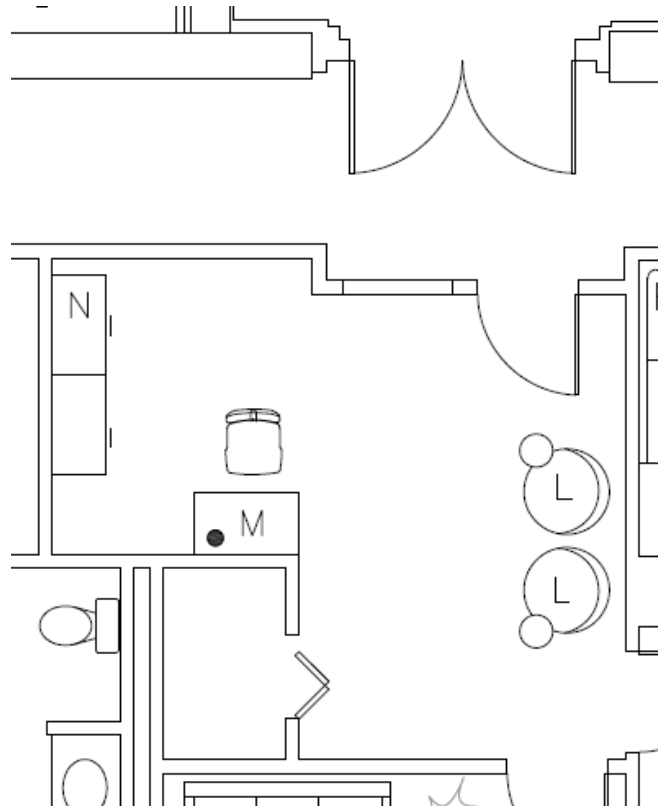
**BCMMSSB36RNN**

**Square Meeting/Kitchenette Table - Blade Star Base,**  
 36"w, **Radius edge**, No Cut-Out (1-3/16")



# Selected Furniture Catalogue

CH3348-OSJ | MBA



# Reception



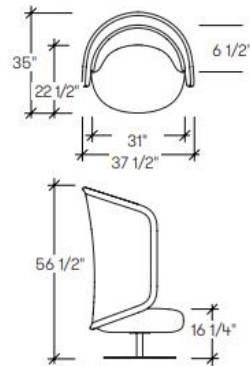




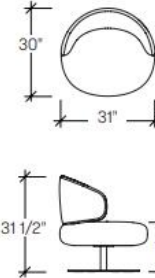
Dimensions

L

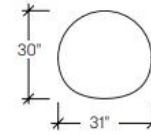
## libelle lounge product information



Libelle Lounge, Lounge  
with Privacy Screen  
(TKBA3)



Libelle Lounge, Lounge  
(TKBA2)



Libelle Lounge, Pouf  
(TKBA1)

Libelle, Dutch for "Dragonfly", is a functional, yet whimsical, collection of seating options, including: a pouf, a low back lounge chair, and an innovative lounge chair with privacy. Designer Khodi Feiz created Libelle to deliver a personal escape while accommodating small collaborative interactions. An optional tablet arm is a versatile addition that will enhance functionality and can be installed after it's placed to either the left or right side. The laidback but sophisticated style of Libelle is perfect for today's flexible work environment.

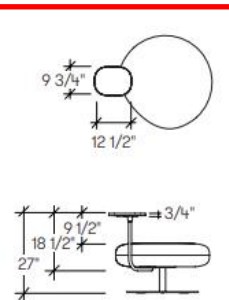
libelle  
Libelle



Lounge chairs Upholstery  
LUUM / Multipurpose | Actuate  
Color: Induction

Lounge chairs Metal base and table support:  
Teknion | Foundation Paint  
Color: Sand | 27/3

L



Libelle Tablet  
(TKBB)



Writing tablet TOPS:  
Teknion | Foundation Laminates  
Color: Smoked Oak | 7B

Collection



M

teknion expansion cityline

Rectangular Height Adjustable Workstation for Navigate, T-Leg base, Standard Electrical, Height adjustable range 27" - 43".

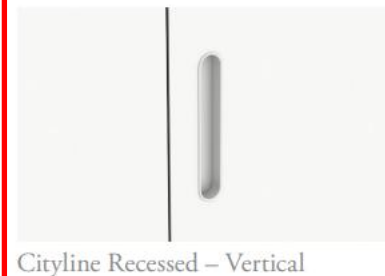
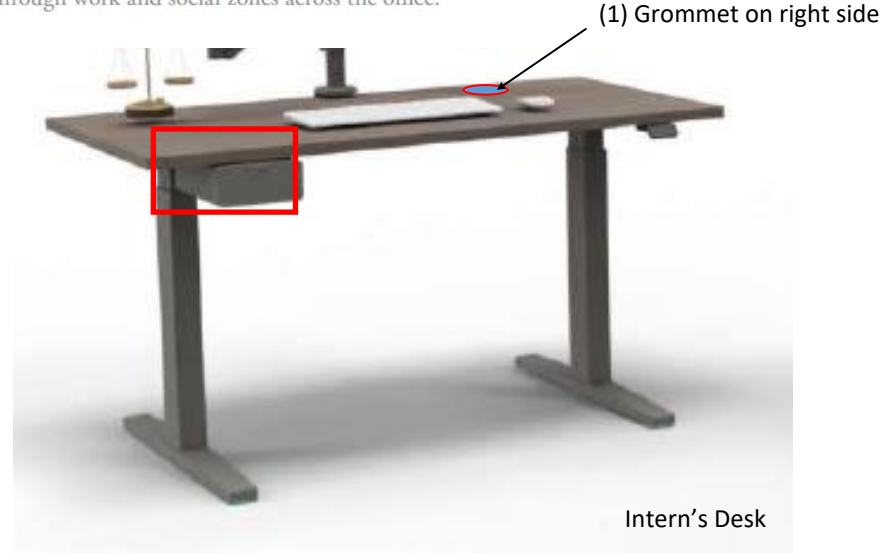
Dimensions: 29"D x 52" W,

Desk top / edge and drawer:  
Teknion | Foundation Laminates  
Color: Smoked Oak | 7B



Desk Metal T-Base:  
Teknion | Foundation Paint  
Color: Greystone | U/24

Inspired by the definitive patterns of the urban landscape, Expansion® Cityline's unique design employs a beam framework that maximizes office connectivity. The beam serves both as a structural spine and as an avenue for data and power to and through work and social zones across the office.



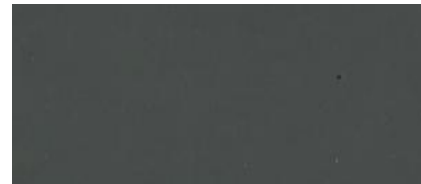
Drawer handle style



teknion navigate



Desk tops / edge:  
Teknion | Foundation Laminates  
Color: Smoked Oak | 7B



Desk Metal T-Base:  
Teknion | Foundation Paint  
Color: Greystone | U/24

Rectangular Height Adjustable Workstation for Navigate, T-Leg base, Standard Electrical, Height adjustable range 27" - 43", 29"D x 52" W,



Expansion® Casegoods is a laminate casegoods collection suited to a broad range of office applications. A uniform product platform and choice of materials makes it easy to design classic or contemporary office suites tailored to budget requirements. Expansion Casegoods projects an image of quality at a competitive price.

Credenza:

Teknion | Foundation Laminates

Color: Smoked Oak | 7B



Metal pulls:

Teknion | Foundation Paint

Color: Greystone | U/24



Top for solid storage: 18"D x 36" W, (1-3/16" D

(2)Lateral File2 with pulls: 18"D x 36"W, 2 drawers at 28"

handle styles



Standard Expansion



Rectangular



Slim Pull



Edge – Standard Pull



Edge – Small Pull



Modern Straight Pull (ADA)